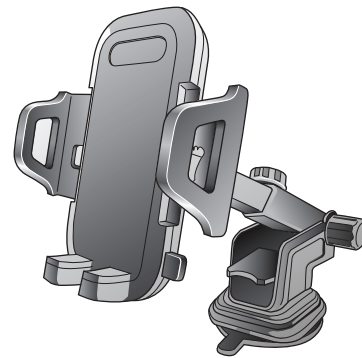


maxboost
EXTENDABLE ARM
CAR MOUNT

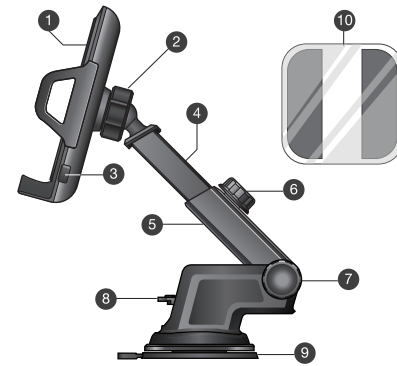
User Manual

WHAT'S IN THE BOX

Congratulations!
Thank you for choosing the Maxboost Extendable Arm Car Mount! This product is a universal car mount for smartphones, providing you a hands-free experience. Please take a moment to read over this manual to learn how to properly use your universal mount.



PRODUCT OVERVIEW



- 1. Mount Head
- 2. Mount Head Dial
- 3. Quick Release Button
- 4. Extendable Neck
- 5. Mount Arm
- 6. Mount Neck Dial
- 7. Mount Arm Dial
- 8. Locking Mechanism
- 9. Suction Cup
- 10. Mounting Square

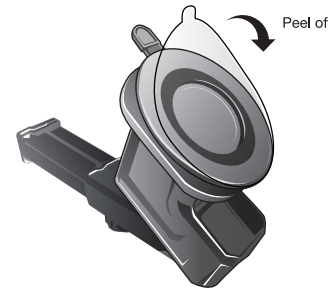
INSTALLATION

BEFORE INSTALLATION

1. Clean desired surface to ensure there is no debris.



2. Remove protective layer from suction cup (if any).



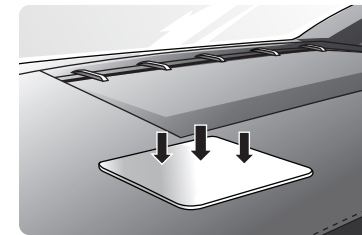
INSTALLATION

METHOD 1

Mounting Square (Recommended)

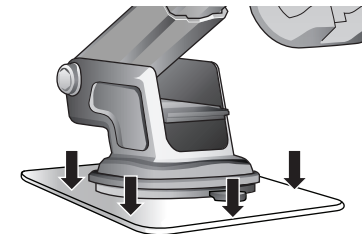
NOTE: Complete Method 1 if you are applying the Car Mount on a curved/uneven surface. This will help create a better surface for the Car Mount to stick on. (To learn how to install the Mounting Square on the dashboard/surface, please see section "Mounting Square Plate" in the "HOW TO USE" page.)

1. Attach the Mounting Square (PC) onto the dashboard or flat surface.

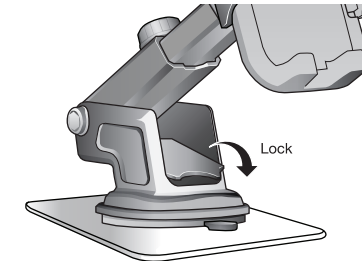


INSTALLATION

2. Place the Car Mount onto the mounting square and apply pressure.



3. Push the locking mechanism down to lock the suction cup.



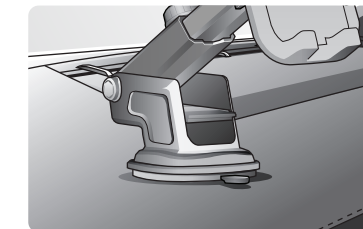
4. Adjust the Car Mount arm to your liking.

INSTALLATION

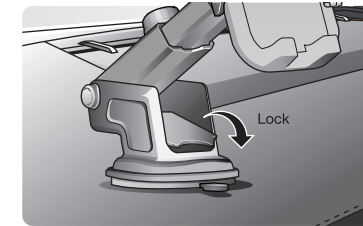
METHOD 2

Place on Dashboard

1. Place the Car Mount directly onto the dashboard and apply pressure.



2. Push the locking mechanism down to lock the suction cup.



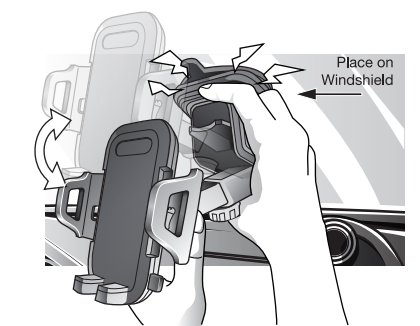
3. Adjust the Car Mount to your liking.

INSTRUCTIONS

METHOD 3

Place On Windshield

1. Attach the Car Mount to the windshield.
2. Hold the Car Mount with one hand, and use the other hand to push the locking mechanism down.

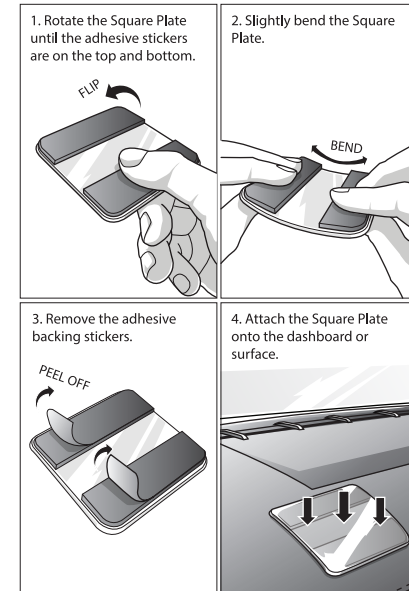


3. Adjust the Car Mount to your liking.

HOW TO USE

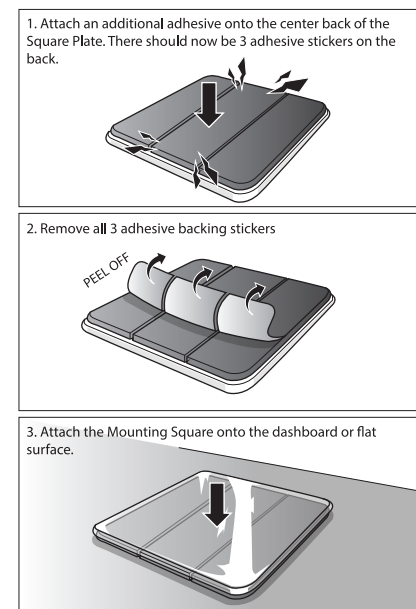
Mounting Square Plate

To use the Mounting Square Plate on a curved surface:



HOW TO USE

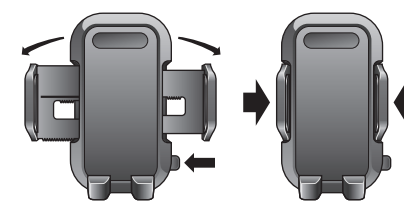
To use the Mounting Square Plate on a flat surface:



HOW TO USE

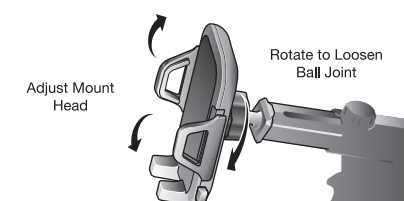
Insert Device

Press and hold down the quick release button to extend the mount arms. Insert your device and lock it in by pushing the extendable arms back in.



Adjusting Mount Head

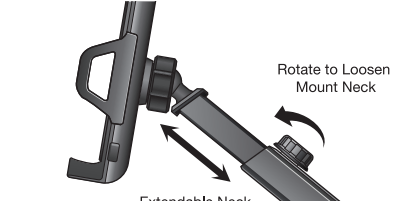
Rotate the mount head dial to loosen the mount head and ball joint. Adjust to your liking, then rotate the dial in the opposite direction to lock the mount head in place.



HOW TO USE

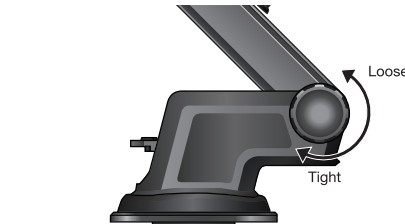
Extending/Shortening Mount Neck

Rotate the mount neck dial. Adjust to your liking, then rotate the dial in the opposite direction to lock the length in place.



Adjusting Mount Arm

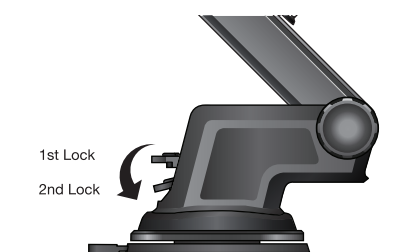
Rotate the arm dial (near the base). Adjust in a backwards/forwards motion. Rotate the dial in the opposite direction to lock the mount arm in place.



HOW TO USE

Locking Mechanism

There are two locks on the locking mechanism; each lock provides a different lock strength. You may use the first lock on smoother surfaces and the second lock on more textured surfaces. The second lock provides a stronger hold.



WARNINGS

Warnings

Read all the instructions before using this product. Failure to read and follow these safety instructions could result in potential hazards causing serious injury and/or property damage, for which damages you, (the purchaser), not Maxboost (the seller) is liable.

1. Do not modify, disassemble, open, crush, puncture or shred the product.
2. Do not drop the product as it may become damaged/loosened over time.
3. This product is not intended for children and is not a toy. Keep out of reach of children.
4. All pieces of the product can be harmful if swallowed.
5. Avoid extreme high temperatures/direct sunlight as much as possible as it may affect how well the product adheres.
6. Ensure that all persons who use this product are familiar with the safety guidelines set forth in this manual.

FAQ

- Q:** My Car Mount won't stay on the dashboard/mounting square. What do I do?
A: If dust or dirt gets stuck, restore the suction cup by rinsing it with warm water and then leaving it out to air dry.
Note: Prevent dust, particles, or fingerprint marks from getting on the suction cup to help retain its stickiness.
- Q:** My dashboard is made of leather/some other cloth material and the mount is not sticking.
A: Use the included Mounting Square. This will provide a better surface area for the Car Mount to stick onto.
- Q:** Will the weather affect how well my suction adheres?
A: Yes, the sun may affect how well the Car Mount adheres. Try to keep the Car Mount away from direct sunlight as much as possible.
- Q:** How do I remove the Car Mount?
A: Unlock the locking mechanism and pull the tab on the suction cup until air is allowed through for easy release.

maxboost
WARRANTY CARD

Date of Purchase

___ / ___ / ___

Need Help?

service@maxboostpower.com
www.maxboostpower.com