

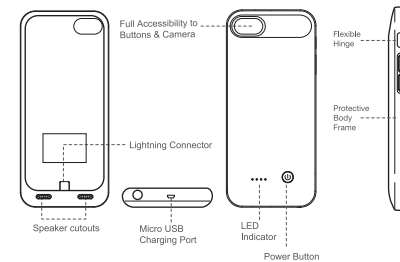
maxboost

Vibrance Power Battery Case
for iPhone 6/6S

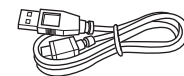
User Manual

WHAT'S IN THE BOX

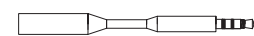
Maxboost Vibrance Power Battery Case



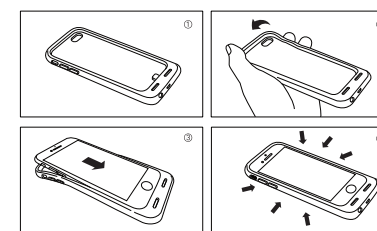
Micro USB Charging Cable



Headphone Jack Extender

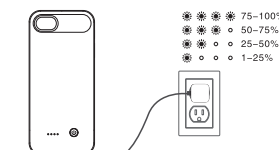


INSTALLATION



1. Make sure the battery case is clear of dust and debris.
2. Gently fold back the flexible hinge near the top of the battery case.
3. Slide the iPhone onto the battery case. Make sure to snugly connect the phone to the lightning connector.
4. Ensure that the frame of the case is snugly against the phone.
5. To uninstall the case, repeat step 2 and slide the phone out.

HOW TO CHARGE



Charging the Battery Case

1. Connect the case to any USB charging port via the provided USB cable, and the case will start charging. The LED indicator will flash when charging, and will become steady when fully charged.
2. When charging the case and iPhone together, make sure to install the case on the iPhone before connecting them to a power source. The external power source will fully charge the iPhone first, then recharge the case.

How to Charge the iPhone 6 / 6S

1. Place the iPhone into the Vibrance Power case.
2. PRESS and HOLD the power switch button for two seconds, the case will begin to charge.
3. When charging starts, the iPhone will vibrate or make a "beep" sound.
4. The battery icon on the upper right corner of the screen will feature a lightning bolt to indicate that charging is in progress.

CHARGING & CONTROLS

When powering on the battery case, the LED lights will light up to show the remaining power in the case as follows:



Power is switched off by default. To manually turn the charger ON or OFF, PRESS and HOLD the button for two seconds.



Synchronization

The battery case supports sync-through technology. This means that you can sync your iPhone to a computer without having to take the battery case off. Simply plug the micro-USB cable into the battery case and the other end into the computer's USB slot. Synchronization will begin immediately.

Specifications

Battery type:	Li-polymer
Capacity:	3.7V/3200mAh
Input:	DC 5V/1A (Max)
Output:	DC 5V/1A
Dimension:	152.7*70.9*15.5(mm)

GENERAL FAQ

Q: The case does not charge. What should I do?
A: Try using a different micro-USB cable and/or a different USB wall charger.

Q: The case does not charge the phone. What should I do?

A: Uninstall and reinstall the battery case onto the phone. If necessary, try to clean the connection between the phone and the battery case.

Q: When I try to charge the case and the phone together, the phone does not charge.

A: When trying to charge the battery case and the phone together, the case will first pass charge to the phone. Once the phone is fully charged, the case will start charging itself.

If you are experiencing something different, for diagnostic purposes, check to see if you are able to charge the battery case when the phone is not attached. Also, check to see if the battery case is able to charge the phone when not plugged into a power source.

Q: Will this case work with a screen protector?

A: Most screen protectors that leave the edges free around the phone will work with the case. Edge-to-edge protectors may not work since they cover the edges.

GENERAL FAQ

Q: How long does it take to charge the battery case?
A: Depending on the power source used, it normally takes 4-7 hours to fully charge the battery case.

Q: I cannot plug in my headphones.

A: The battery case's headphone cutout is designed for the original stock headphones in mind. Headphones of other brands may be too thick to fit through the case's cutout. A headphone extension adapter is included with the battery case. Simply plug your headphones through the case with the headphone adapter to enjoy your music!

Q: I have a right angle (L-shaped) headphone. Does it fit?

A: If your headphones do not fit through the case's headphone cutout, use the included headphone extension adapter.

Q: How many times will this charge the phone?

A: Depending on the phone usage during the charge, the battery case should be capable of fully charging the phone once.

GENERAL FAQ

Q: Does this battery case use a micro USB or a lightning cable to charge?
A: The battery case charges with a micro USB cable.

Q: I plan to travel outside the United States. Will I be able to use the battery case?

A: When using the Apple stock charger AND a compatible country charging adapter, the battery case will work without issue. Always verify the voltage of any country you visit and purchase a compatible adapter for optimal performance. The battery case is tested at 120V in the U.S.

Q: What does the lifetime warranty cover?

A: Maxboost is proud to offer a lifetime warranty on its battery cases. We will provide coverage of our products for the extent of the products life. If a substantial defect in material or workmanship arises with your Maxboost product due to a manufacturer's defect, case degradation, or normal wear and tear and a valid warranty claim is received by Maxboost, we will gladly replace your product.

BENEFITS & WARNINGS

Additional Hours

- Add 7 hours talk time on 3G
- 📶 Add 10 hours web browsing time
- 🎵 Add 30 hours music playback time
- 📺 Add 9 hours video playback time

Warnings

1. Product is covered by a lifetime warranty.
2. Please read all instructions and warnings prior to using the case.
3. Do not modify, disassemble, crush, open, or puncture the battery case.
4. Do not expose the product to water, rain, or any chemical liquid.
5. Keep the product away from direct sunlight and open flame to prevent overheating.
6. This product is not a toy, please keep the product away from children.

maxboost

WARRANTY CARD

Date of Purchase

___ / ___ / ____

Need Help?

service@maxboostpower.com
www.maxboostpower.com